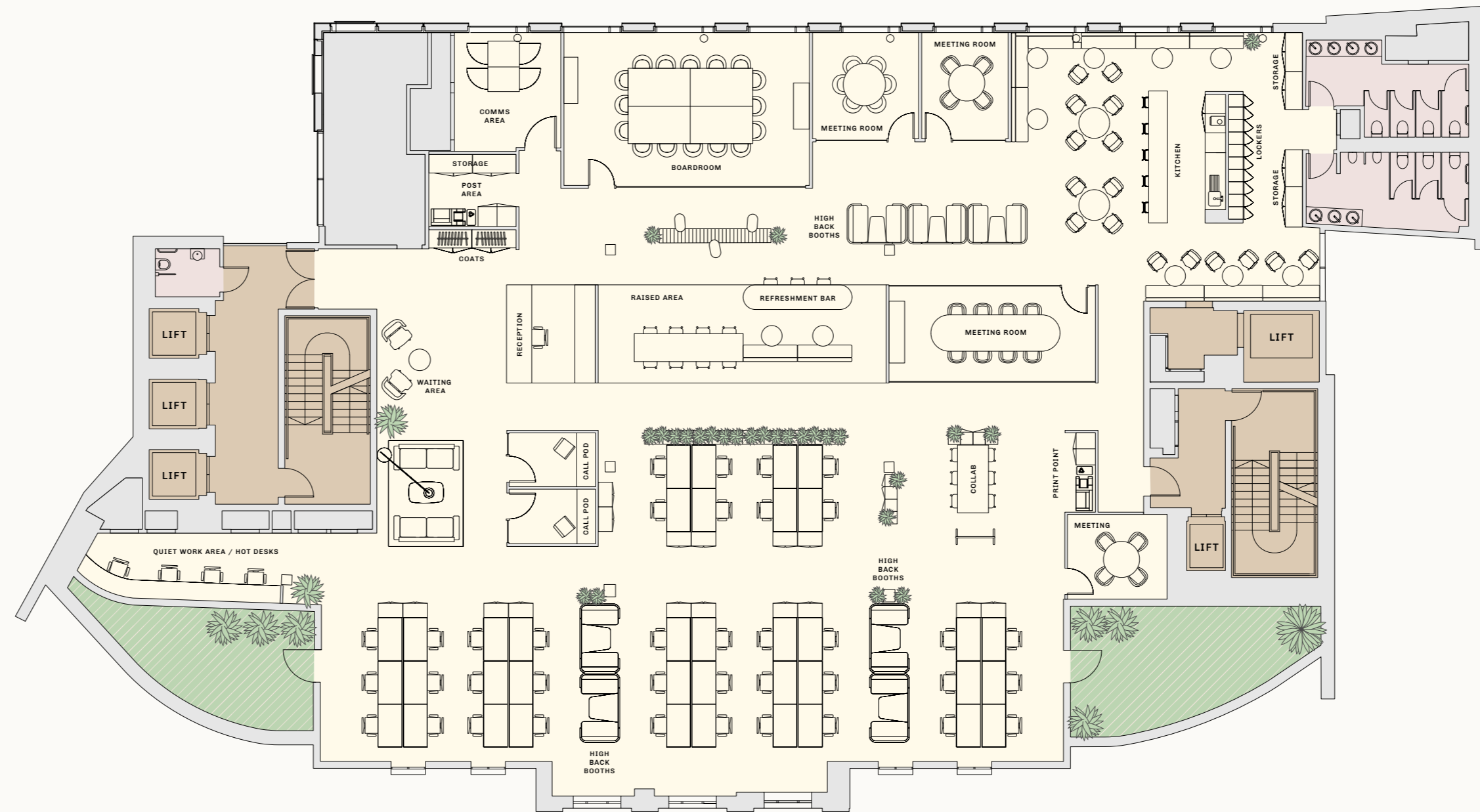


EIGHTH FLOOR INDICATIVE SPACE PLAN

6,930 SQ FT /
644 SQ M

Reception	1	Open Plan Desks	38
Post/Print Areas	2	Lockers	10
Call Pods	2	Storage	3
Meeting Room (4)	2	High Back Booths	5
Meeting Room (6)	1	Comms Area	1
Meeting Room (8)	1	Waiting Area	1
Boardroom (16)	1	Coats	1
Collaboration/ Agile Working	6		
Quiet Work Area/ Hot Desks	4	Total occupancy including Open Plan Desks, Collaboration/ Agile Working & Quiet Work Area/Hot Desks	48
Refreshment Bar	1		
Kitchen	1		



- CORE
- OFFICE
- WC
- TERRACE

Plans are indicative only; Not to scale.

KING WILLIAM STREET

GRACECHURCH STREET

